

CABLE 138 RF: IPEX MHF PLUG + RP SMA STRAIGHT BULKHEAD JACK WITH O-RING RATED TO IP67/68 + MULTIPLE CABLES SIZES

SPECIFICATIONS:

1. IPEX MHF PLUG FOR $\phi 1.13\text{MM}$ CABLE: 20278-112R-13, FOR $\phi 1.37\text{MM}$ CABLE: 20351-112R-37, FOR RG178 CABLE: 20278-112R-18, FOR $\phi 1.32\text{MM}$ DS CABLE: 20278-112R-32.
2. COAXIAL CABLE, SEE P/N OPTIONS.
3. RP SMA ST BULKHEAD JACK WITH O-RING RATED TO IP67/68, PN: RFCT-SMA008-F78, GOLD.

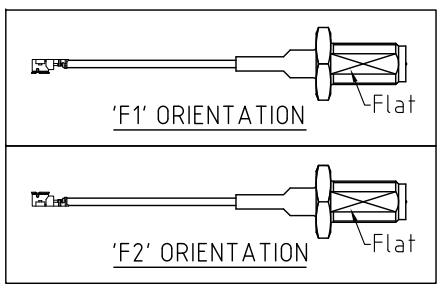
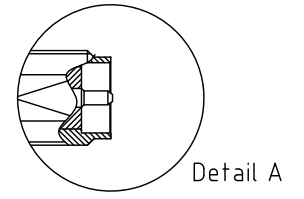
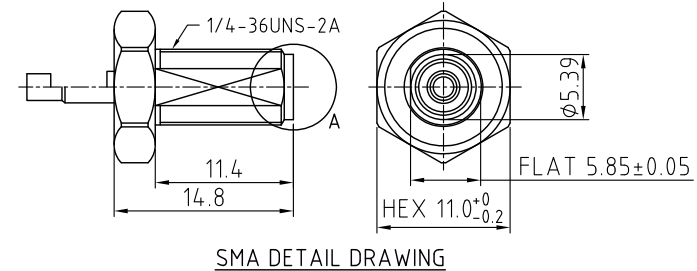
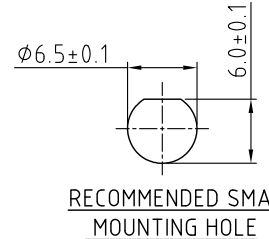
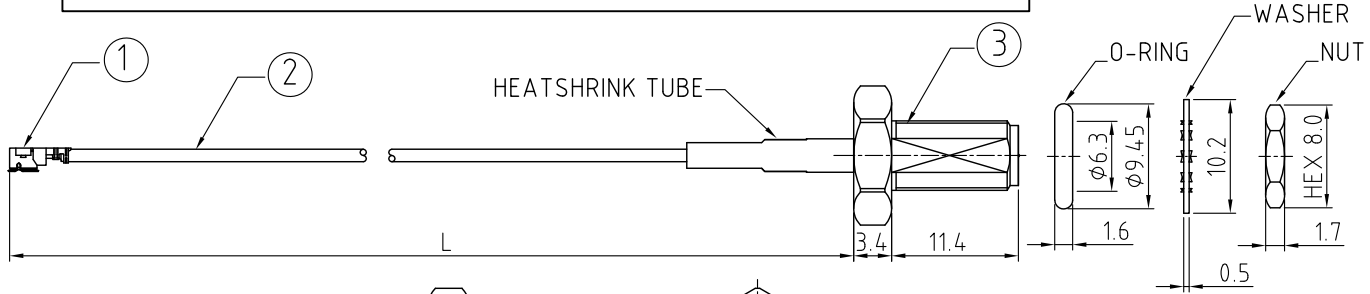
USAGE PRECAUTIONS: CABLES USING 'MICRO' COAX ARE DELICATE:
 (i) HANDLE WITH CARE.
 (ii) DO NOT TWIST; APPLY EXCESSIVE FORCES OR SHARP BENDS TO THE CABLE. DO NOT FORCEFULLY DEFORM WIRES.
 (iii) CONSULT CONNECTOR MANUFACTURER'S DATASHEETS FOR DETAILED NOTES ON HANDLING INSTRUCTIONS.

ENVIRONMENTAL:

- A. BULKHEAD MOUNTED CONNECTOR (RFCT-SMA008-F78) TESTED TO THE FOLLOWING SPECIFICATION:
- i. IP6X - DUST TIGHT - NO PARTICLE INGRESS.
 - ii. IPX7 WATERPROOF FOR 30 MINUTES UP TO 1M UNDERWATER.
 - iii. IPX8 WATERPROOF FOR 48 HOURS AT 1M UNDERWATER.
 - iv. IPX8 WATERPROOF FOR 12 HOURS AT 5M UNDERWATER.
 - v. PRESSURE TEST - 1 BAR FOR 10 SECONDS.

NOTES:

1. THE ORIENTATION OF CONNECTORS ON DRAWING IS FOR REFERENCE ONLY, IF THE ORDER IS LEFT BLANK THE CONNECTOR WILL NOT HAVE FIXED ORIENTATION.
2. FIXED ORIENTATION IS SUGGESTED FOR CABLE LENGTH 25MM TO 100MM. PLEASE SPECIFY THE FIXED ORIENTATIONS FROM THE ORDER CODE (F1, F2, ETC)
3. CONTACT GRAD CONN IF THE ORIENTATION YOU REQUIRE IS NOT SHOWN.
4. WORKING FREQUENCY RANGE: DC-3GHz.
5. OPERATING TEMPERATURE: $-40^{\circ}\text{C} \sim +90^{\circ}\text{C}$
6. IMPEDANCE: 50 OHM.



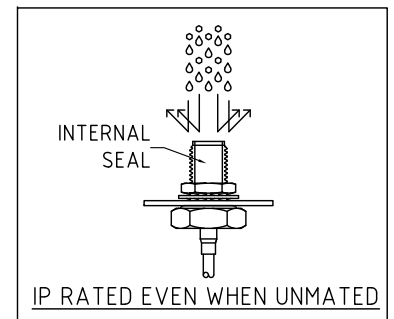
HOW TO ORDER
 CABLE 138 RF - X X X - X X - X - X

"L" LENGTH IN MM:
 eg: 100MM = 100
 (MIN. 025-MAX.400)
 STANDARD = 100, 150, 200
 Tolerance: <50mm : $\pm 2\text{mm}$.
 51-200mm: $\pm 5\text{mm}$.
 201-400mm: $\pm 7\text{mm}$.

CABLE SIZE OPTIONS:
 0 = $\phi 1.13\text{MM}$ CABLE, COLOR: GRAY.
 1 = $\phi 1.13\text{MM}$ LOW LOSS CABLE, COLOR: GRAY.
 2 = $\phi 1.37\text{MM}$ CABLE, COLOR: BLACK.
 3 = RG178 CABLE, COLOR: BROWN.
 4 = $\phi 1.32\text{MM}$ DS CABLE, COLOR: GRAY.

WASHER AND NUT OPTIONS:
 BLANK = SEPARATELY PACKED (STANDARD)
 A = ASSEMBLED WITH CONNECTOR

ORIENTATION OPTIONS:
 BLANK = DOES NOT HAVE A FIXED ORIENTATION
 F1 = MHF CONNECTION DOWN (L=25-100MM)
 F2 = MHF CONNECTION UP (L=25-100MM)
 (SEE NOTES 1, 2, 3 AND DIAGRAMS FOR MORE INFORMATION)



REV. DATE & DRN
11 05/07/12 - NYM RELEASE
12 06/07/13 - NYM ADD NOTE 4.
13 06/08/13 - NYM REVISED SMA PART NUMBER
14 23/07/15 - NYM AMEND FREQUENCY TO 3GHz.
15 30/07/15 - NYM UPDATE SMA PART NUMBER.
16 16/06/16 - NYM ADD IP67/68 RATING INFO.
17 30/07/16 - NYM ADD I3 LL CABLE OPTION.
18 02/07/17 - NYM ADD RG178 CABLE OPTION.
19 27/05/19 - NYM ADD OPERATING TEMP.
20 05/07/21 - NYM ADD CABLE SIZE OPTION 4.
21 25/02/24 - CC ADD IP RATING VIEW

Scale:	NTS
Drawn:	CC
App'd:	XXX
Date:	25 FEB. '24

THIRD ANGLE	Unstated .X .XX .XXX ANGLES	Tolerances: N/A N/A N/A N/A
Title	CABLE ASSEMBLY	
Revision:	2.1	Unit: mm

NAUTILUS
 IP Rated RF Products

GRADCONN
 www.gradconn.com

Type:	Cable 138 RF
CABLE 138 RF	
Drawing Number:	
Sheet 1	of 1
Drawing	E and O E